



Jag JOURNAL



2020

Madison Station Elementary School * 459 Reunion Parkway * Madison, MS 39110



COMING SOON



Jan. 9: Report Card Day

Jan. 17: K- 100th Day of School

Jan. 20: Holiday



6- Mary Minich (TST)

11- Nikki Ivy (3)

14- Melanie Hughes (Speech)

15- Bekah Hankins (2)

17- Heather Rogers (Resource)

17- Tranacie Young (SPED Asst)

18- ReeRee Byron (5)

22- Princess Thompson (Music)

24- Allie Malone (K Asst)

26- Shanda Walenta (Nurse)

28- Mary K. Segrest (1 Asst)

30- Alyssa Taylor (K Asst)

FROM OUR PRINCIPAL

Dear Madison Station Families,

Happy New Year! As we embark on this New Year, we are looking forward to many wonderful learning opportunities. January and February are prime teaching and learning months. Students and teachers have returned to school energized and focused. Please take advantage of these months as nightly activities tend to be at a minimum which affords students more time to focus on assigned homework, extra reading and extra practice with math concepts.

As we get back into our routine, please partner with us to ensure that your child is able to take full advantage of instructional time by minimizing absences, late arrivals, and early checkouts. Research indicates a close connection between student absenteeism and academic achievement. Also, make sure that your child has lunch money in his/her account. The cafeteria will not accept charges. Therefore, students must have money in their account to receive a full tray.

Report cards will be distributed Thursday, January 9. Please be sure to contact your child's teacher should you have any questions about their progress. Teachers are available for meetings, phone conferences and email communication and would be happy to talk with you about your child's progress.

Thank you for a wonderful first semester! Our students have accomplished much and will no doubt continue to grow and flourish physically, mentally, and academically. We are excited about what 2020 has in store for our school!

Mrs. Hanna
Principal



FROM OUR PTO PRESIDENT

Happy New Year!

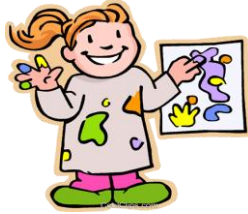
I hope you had a wonderful Christmas break and that 2020 is off to a great start. Our calendars will soon start filling up with parties, field trips, testing dates, and many other activities.

Thank you to Stephanie Stevens for the countless hours she spends making sure we can all stay informed from our monthly newsletters. They are always so cute too! Thank you to Melanie Williams and the t-shirt committee for their hard work on the fall preorder. I hope everyone got to order one of the super cute shirts.

Thank you to everyone for their continued support of the PTO and Madison Station. I encourage you to stay involved in your child's classroom and PTO activities. The year is going by fast and your support truly makes a difference at our school.

Sincerely,
Kathleen Biggs





January Artists of the Month

Emily Smith grew up and currently lives in New Orleans with her husband and 7 year old son. She works a framing manager, and spends her free time painting. She is inspired by everything New Orleans! The sparkling rhinestones on the costumes, the beaded Mardi Gras Indians, and the shiny brass instruments. She likes to use different media in her artwork to create dimension and really bring the artwork to life. She has had artwork in art shows like the 30 Artists for the Tricentennial and the Satchmo Summer Fest. Emily is the cousin of Marsh and Charlie Matthews.

Susannah Morse Mylroie has been painting since her college days at Rhodes College in Memphis, Tennessee. As a native and current resident of Jackson, she enjoys being able to paint on her porch for twelve months out of the year. Susannah is the owner and director of Morse Speech Pathology Services, a company started by her mother in 1981. When she isn't working, she loves to grab her paint brushes, drink a cup of coffee, and listen to music.

BUY YOUR
Yearbook



**Order your child's yearbook
at www.jostensyearbooks.com.**

**The cost is \$40.
Deadline is Feb. 21**

For any questions, contact Robin Ellis
601-540-1918 or Emily Poole 662-571-5961.



Our December luncheon was a beautiful Christmas meal hosted at Reunion Country Club complete with a live pianist playing Christmas songs and decorations that lit up the room. The Teacher Appreciation Committee would like to thank the staff at Reunion Country Club for making it an extra special event. Also, thank you to the many families that served in our classrooms during this time so our teachers could enjoy a long lunch. It wouldn't have been possible without everyone's help! The teachers and staff also went home with a beautiful homemade ornament from a local artist and a Christmas tea towel. We look forward to a lot of fun Teacher Appreciation events in 2020! We will kick-off with a "Soup-er" Bowl luncheon on January 29th!

Happy New Year!



Sonji Ellis – Teacher of the Year

We proudly announce Mrs. Sonji Ellis, nominated and voted by peers, as our Madison Station Elementary 2019-2020 Teacher of the Year. Mrs. Ellis, who has a large presence in our school days, serves the lower side as Counselor. From small group meetings to teaching whole classes, Mrs. Ellis works to create relationships with our youngest students and those relationships carry over throughout all our students' years at MSE. Mrs. Ellis has served twelve years at Madison Station and this is her 24th year in the profession. Mrs. Ellis has experience teaching language arts in addition to serving as school counselor. Mrs. Ellis sparks joy in every interaction and in every facet of her day. Students are loved well and guided lovingly in her care.

Congratulations to our Teacher of the Year, Mrs. Sonji Ellis!

Alyssa Taylor – Assistant Teacher of the Year

Ms. Taylor, Kindergarten Assistant Teacher, is one to be counted on. Her dedication to excellence and attention to detail are only a couple characteristics of her strong work ethic. She is a proactive self-starter, always seeking opportunities to reflect on ways to bring good to great. During the past three years her commitment to school duties is unparalleled. She is a dedicated life-long learner who recently graduated from University of Southern Mississippi with a master's degree in school counseling. Ms. Taylor chooses us each day, and through her service we all benefit.

Kathleen Biggs – Parent of the Year

As a parent of at least one child at MSE each of the last eight years, Kathleen Biggs has served the MSE family through a multitude of opportunities. From opportunities large and small, Mrs. Biggs looks for time to advance the mission of our school. She has served as a Room Mom for seven years and as Fundraising Chair responsible for raising funds, roughly \$60,000, to enhance curricular and arts experiences. She directly served the Yearbook Committee, Special Events Committee and Fundraising Committee through leadership and support over the years. The leadership and guidance she offers as a member of the PTO Executive Board has helped shape the culture of our parent community. Mrs. Biggs may be found planting plants, working with students, supporting volunteers, encouraging staff. There is truly no limit to her dedication and perseverance in support and love of our precious school.